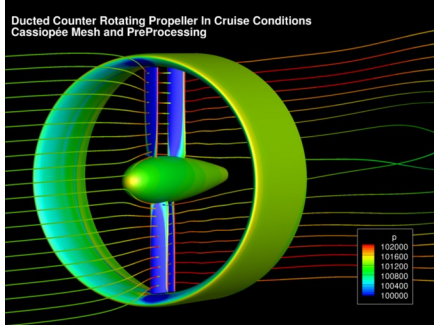
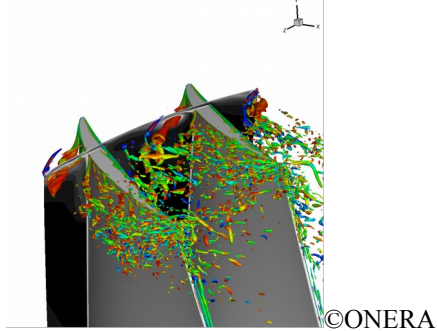


11h55 Illustration of some Cassiopée meshing and preprocessing capabilities *Gregory Delattre* (DAAP/H2T)



12h15 Advanced pre-and-post-processing for ZDES and LES simulations of Turbomachinery and Rotary Wing applications *Julien Marty* (DAAP/H2T)



12h35 Lunch

Advanced methods (*Chairman Julien Marty*)

13h45 Large Eddy Simulation of an aerothermal configuration with high order methods in elsA *Guillaume Bégou* (DMAE/ITAC)

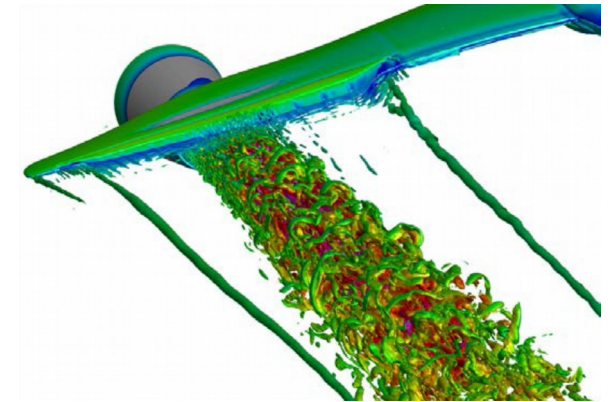
14h10 Jet noise simulation in cruise condition with HO numerical methods involving an adaptative shock-capturing methodology *Guillaume Puigt* (CERFACS)

14h35 Future of laminar/turbulent transition prediction methods in elsA: parabolus method *Guillaume Bégou* (DMAE/ITAC)

15h00 Perspective, roundtable & conclusion



These days are dedicated to the memory of the original Architect of the elsA software, our colleague Michel Gazaix, who died prematurely on August 8th.



8th **elsA** User's Workshop

22nd and 23rd September 2016



Châtillon centre
Contensou room
29, av de la division Leclerc
92320 Châtillon



Châtillon centre
Contensou room
29, av de la division Leclerc
92320 Châtillon

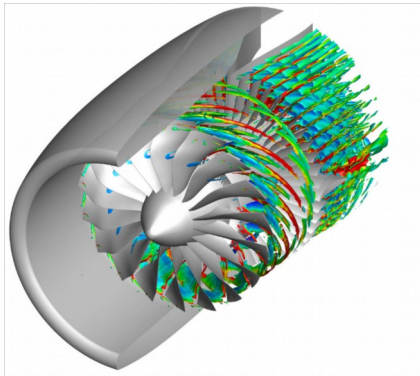
Schedule : Thursday, September 22nd, 2016

9h30 Welcome and coffee

10h00 Introduction

[Rotating Flows](#) (Chairman *Arnaud Le Pape*)

10h10 Advanced Turbomachinery elsA computations at Safran *Martin Simon, Matthieu Lucas, Vincent Brunet* (SAFRAN group)



©CERFACS

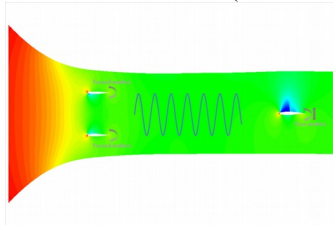
10h45 Unsteady simulations dedicated to the prediction of turbomachinery noise *Madj Daroukh* (CERFACS)

11h05 Coffee break

[Aircraft](#) (Chairman *Gérald Carrier*)

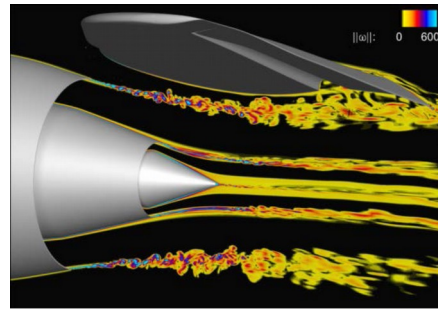
11h25 Application of Advanced Turbulence Models for the Prediction of Juncture Flows and Aircraft Performances *Fabien Gand* (DAAP/ACI)

11h45 Numerical restitution of gust load response in transonic flow *Fabien Huvelin* (DADS/MSAE)



©ONERA

12h05 Numerical simulations of jets for Civil Aircraft applications *Fulvio Sartor* (DAAP/ACI)



©ONERA

12h25 Lunch

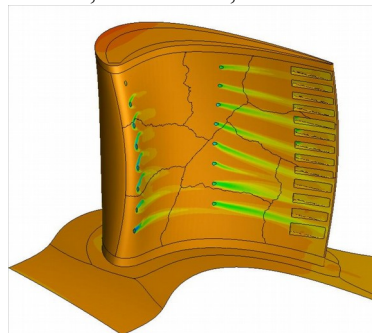
13h35 elsA usage at AIRBUS *Marie-Josèphe Estève* (AIRBUS)

[elsA support](#)

14h10 elsA Support & training course *Julien Mayeur* (DMFN/CLEF)

[Hybrid Capabilities](#) (Chairman *Nicolas Lantos*)

14h35 Turbomachinery & Aircraft applications *Marie-Claire Le Pape, Lionel Castillon, Matthieu Soismier* (DMFN/NUMF, DAAP/H2T, DMFN/CLEF)



©ONERA

15h15 Coffee break

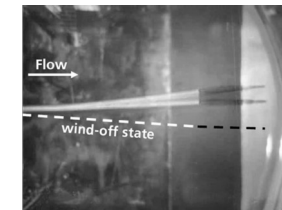
15h35 Hybrid methods and flexible mesh capabilities *Thomas Renaud, Bruno Maugars, Bertrand Michel* (DMFN/DEFI, DMFN/CLEF, DMFN/CLEF)

Schedule : Friday, September 23rd, 2016

9h00 Welcome and coffee

[Code Coupling](#) (Chairman *Julien Mayeur*)

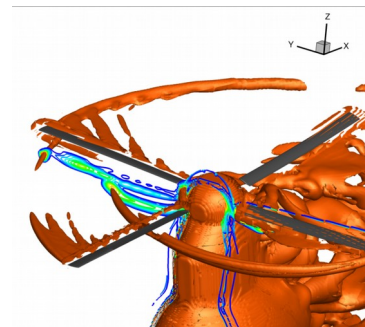
9h30 LCO Aeroelastic Limit Cycle Oscillations On A 3D Wing *Guy Mortchelewicz* (DADS/MSAE)



©ONERA

9h50 Hi-Fi for AeroMechanics computations : A fully non-linear CFD/CSM coupling *Simon Verley* (DADS/MSAE)

10h10 Helicopter Rotor Loads Prediction on the ONERA 7A Rotor Using Loose Fluid/Structure Coupling *Biel Ortun* (DAAP/H2T)



©ONERA

10h35 Optimal Coupling Schemes for Conjugate Heat Transfer Problems with elsA/ZeBuLon *Thomas Arrivé, Marc Errera* (DMFN/NFLU)

11h05 Coffee break

[Pre and post processing](#) (Chairman *Stephanie Péron*)

11h35 Geometry and Meshing with Cassiopee 2.2 *Christophe Benoit* (DMFN/DEFI)